



Operating, Safety and Maintenance Manual

For units manufactured June 2021 to present

15 Cubic Yard Capacity



The Mulch Mule

by ARM – A TruckCorp LLC Company

3026 Saratoga Ave. SW Canton, OH 44706

844-294-5862 • truckcorpllc.com

CONGRATULATIONS!

Congratulations on your purchase of The Mulch Mule! Your machine has been designed and manufactured to make you and your business more efficient.

Please take the time to read and thoroughly understand this manual. Your new power equipment is an efficient tool designed with your work efficiency and safety in mind. Please pay particular attention to the SAFETY, OPERATING and MAINTENANCE sections in this manual as they provide important information on the proper use and care of this equipment.

Parts & Service Phone Number: (844) 294-5862

When calling for parts and service, please refer to the Machine Data Page for important information specific to your equipment. This will allow us to handle your request quickly and efficiently.

You can also contact the company directly via our website, www.truckcorpllc.com.

We thank you again for your purchase!



Table of Contents

Section A: SAFETY Precautions.....	4
A.1 Definitions and Symbols	4
A.2 Basic Safety Procedures	7
A.3 Safely LOADING	9
A.4 Safely TRANSPORTING	11
A.5 Safely UNLOADING	11
A.6 Safely PARKING and STORING	12
A.7 Personal Protective Equipment	14
Section B: Get to KNOW Your Equipment	15
B.1 Equipment Specifications	15
B.2 Trailer and Towing Hardware	16
B.4 Engine, Fuel and Hydraulics	17
B.5 Rolling Floor	17
B.6 Discharge Cute	18
B.7 Tarp System	19
B.8 Optional Equipment	20
Section C: How to MAINTAIN	21
C.1 Maintenance Schedule	21
C.2 Lubrication	22
C.4 Discharge Conveyor Adjustment	26
C.5 Honda Engine	26
C.6 Debris Vacuum Engine	26
C.7 Wiring Diagrams	27
Section D: How to Use and OPERATE	29
D.1 Connecting the Trailer	29
D.2 Towing the Trailer	30
D.3 Loading Material	30
D.4 Engine and Equipment Start	31
D.5 Side Discharge Operation	31
D.6 Rear Unloading	32
D.7 Tarp System Operation for Loading and Unloading	32
Section E: Warranty	33
Mulch Mule Delivery Checklist:	36
Machine Data Page.....	37



Section A: SAFETY Precautions

A.1 Definitions and Symbols



Safety Symbol Definition

These labels require attention to prevent a hazardous situation.



This label indicates a hazardous situation, which if not avoided, could result in minor or moderate injury.



This label indicates a hazardous situation, which if not avoided, could result in death or serious injury.



This label indicates a hazardous situation, which if not avoided, WILL result in death or serious injury.

*These definitions conform with ANSI Z535 standards.

These symbols will be found throughout the manual and are placed in select locations on the unit itself to signify a possible hazard. Please pay close attention to these warnings as they can prevent an accident.



WARNING: This label is located on the tailgate of the Mulch Mule. Entering the machine while in operation could result in death or serious injury.



CAUTION: This label is located on the side door of the discharge chute. Do NOT reach inside the chute while engine is running.



CAUTION: This label is located on the side door of the discharge chute. Do NOT check the load before the engine is turned off. Running materials against the conditioners when not running can cause damage to the machinery.



WARNING: Guards are placed on the machine to protect from moving parts that could be harmful. Always leave guards in place and closed.

WARNING

AVOID PREMATURE WEAR AND POSSIBLE DAMAGE TO MACHINE. DO NOT OVER-TIGHTEN OR UNDER-TIGHTEN CHAIN!

MAIN FLOOR DRIVE CHAIN ADJUSTMENTS

- 1.) Loosen jam nut and turn bolt with wrench clockwise until desired chain tension is achieved. (see figures).
- 2.) Re-tighten jam nut.
- 3.) Repeat this for each main floor drive chain.

CHAIN TENSION ADJUSTMENT

* FLOOR CHAIN NEEDS TO HANG 1" ABOVE CENTER ROUND CROSSMEMBER

ALLOWABLE CHAIN DROOP/SAG

MMM-00000035 PRO-DECAL, INC. TOLL FREE 1-888-803-3225

WARNING: Chain slack should always be checked before use to ensure proper operation of the machine and to prevent damaging any components. Chain adjustment can be done at rear of unit.

WARNING

ADJUST CONVEYOR IDLER ROLLER EVENLY TO ENSURE PROPER BELT TRACKING.

SIDE CONVEYOR BELT ADJUSTMENTS

- 1.) Loosen jam nut (see figures).
- 2.) Turn adjustment nut until desired belt tension is achieved. Be sure to adjust both sides evenly to ensure proper belt tracking.
- 3.) Tighten jam nut. Run belt for 30 to 60 seconds to check for proper tracking. Readjust if necessary.

BELT TENSION ADJUSTMENT

Allowable Belt Droop/Sag (Front View Cut-away)

Approximately 1" Sag in Belt

PRO-DECAL, INC. TOLL FREE 1-888-803-3225 MMM-00000035

WARNING: Proper belt tracking should always be checked before use to insure proper operation of the machine and to prevent damaging any components. Conveyor adjustment can be done at front driver side of unit.

*Due to automatic spring tensioners, routine adjustment may not be necessary.

A.2 Basic Safety Procedures

Read and understand this manual and safety procedures before operating the Mulch Mule.

- Study the operating section of this manual and be familiar with all controls and their functions.
- Always use proper safety precautions. Observe all safety decals.
- Only experienced and mature personnel should operate equipment. No Minors.
- Experienced instructors should train inexperienced operators.
- Check engine fluid levels before starting and maintain per the engine operators manual.
- Inspect machine before operating.
- Confirm NO personnel are in or on the machine while the engine is running.
- NEVER operate the Mulch Mule with any person in or on the machine. Serious injury or death could occur.



BEFORE TOWING AND USAGE:

Activity	Method	Frequency
Check floor chain	Visual	Every usage
Grease rear sprockets	Grease Gun	Every usage
Check tire pressure	Air gauge	Every usage
Check tires for damage and wear	Visual	Every usage
Check engine fuel	Visual	Every usage
Check engine oil	Visual	Every usage
Check hydraulic oil	Visual	Every usage
Start engine for proper operation	Manual	Every usage
Check control panel	Visual	Every usage
Check all safety equipment	Visual	Every usage
Check towing hardware	Visual	Every usage
Check trailer plug and lights working properly	Visual	Every usage
Check break away switch/pin	Visual	Every usage
Retract jack stand fully	Manual	Every usage
Check brake function	Visual	Every usage
Secure side discharge door	Manual	Every usage
Secure OPTIONAL extension conveyor	Manual	Every usage
Secure OPTIONAL leaf vacuum hose	Manual	Every usage

A.3 Safely LOADING

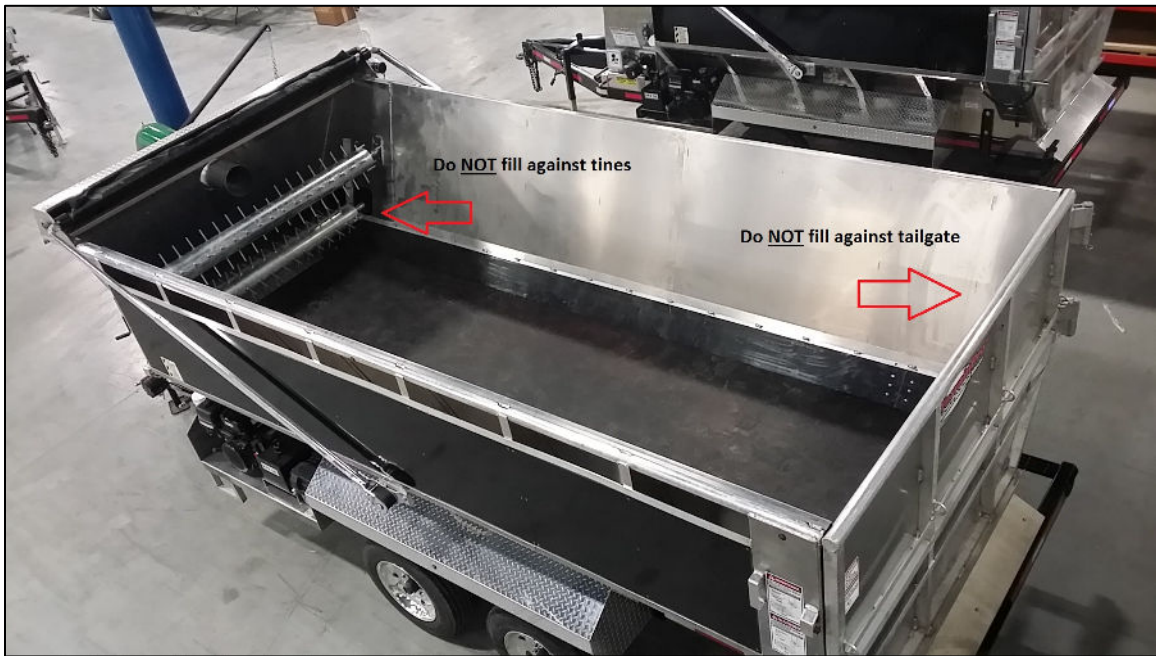
Note: Follow these safety procedures when loading the Mulch Mule to avoid serious damage to the equipment and possibly cause injury.

Note: Moisture and density of material may change the load capacity of the equipment and possibly damage the equipment.

- Always stop engine before checking load or opening guards.
- Always place and load the Mulch Mule on level terrain. Leave connected to tow vehicle. Place the tow vehicle in park and engage the parking brake. Chalk the trailer wheels.
- **DO NOT** load material forward of point indicated on the side of the trailer or damage may occur.



- **DO NOT** load material above the top of the side of the trailer.
- **DO NOT** pack or force material into the trailer.
- **DO NOT** shuttle material against conditioners or tailgate.



- **DO NOT** load the Mulch Mule beyond its stated weight capacity.

Mulch Mule 15-yard unit

GVWR – 9,999 lbs.

GAWR – 16,000 lbs.

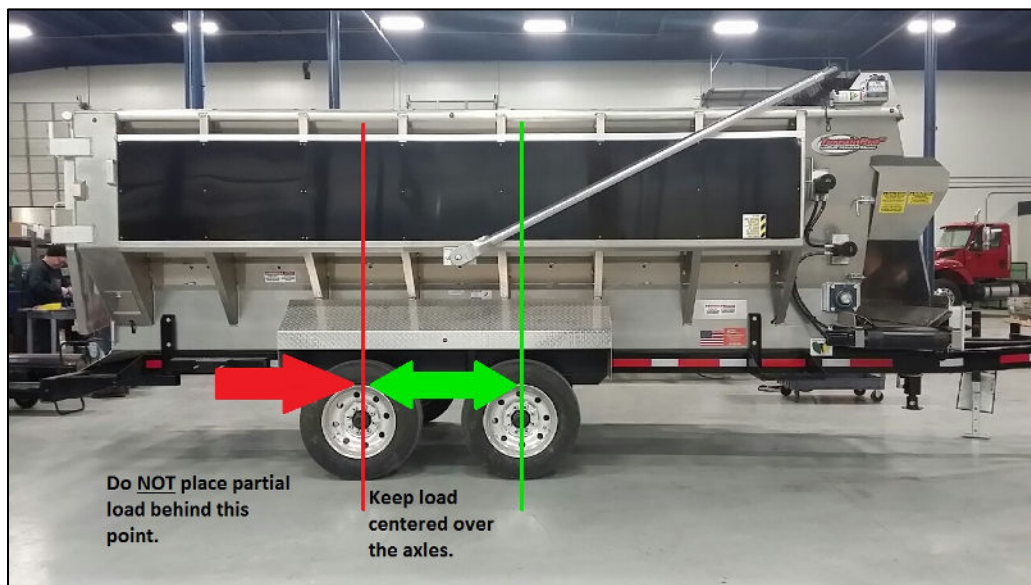
- The VIN tag for the Mulch Mule is located on the front of the trailer, shown below.



A.4 Safely TRANSPORTING

Note: follow these safety procedures when transporting the Mulch Mule to avoid serious damage to the equipment and possible injury to the operator(s).

- Confirm all lights are working properly, including brake lights, turn signals and marker lights.
- After the first 50 miles of operation check that the wheel nuts are tightened to 150/105 ft. lbs. (Depending on Model) – perform this step every 100 miles thereafter.
- Check to make sure the jack stand is raised and wheel chocks are removed.
- NEVER transport individuals inside the equipment.
- When driving on public roads always follow local traffic laws and regulations associated with towing a trailer.
- Use precautionary measures when parking on public roads.
- Use extra caution when towing on wet or icing roads, loose ground, or muddy surfaces.
- NEVER transport a partial load positioned at the rear of the equipment (behind the axles). Position load for transport over the axle center line.



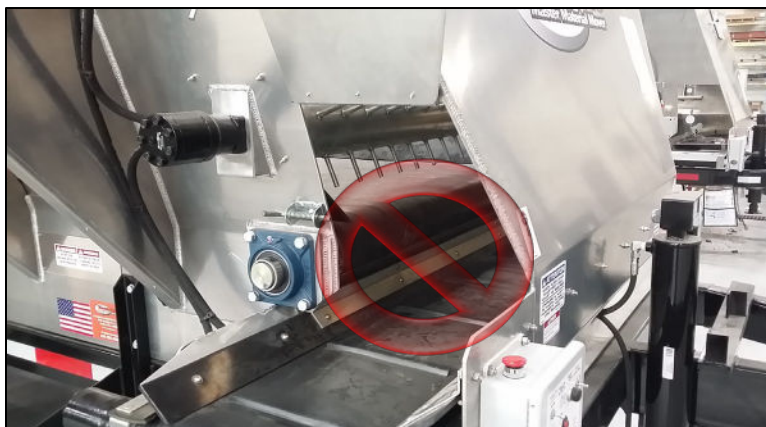
A.5 Safely UNLOADING

Note: follow these safety procedures when unloading the Mulch Mule to avoid serious damage to the equipment and possibly cause injury.

- **NEVER** operate the machine with a person inside the equipment. Death or serious injury could occur.
- Observe all safety decals and precautions while using equipment.
- Always stop engine before checking load or opening guards.
- Always place and load the Mulch Mule on level terrain. Leave connected to tow vehicle. Place the tow vehicle in park and engage the parking brake. Chock the trailer wheels.
- Lower the jack stand as needed to raise the side discharge chute to the proper height required for placing wheel-barrow or other collection device.
- Lower the jack stand when operating the Mulch Mule when the machine is disconnected from the tow vehicle.



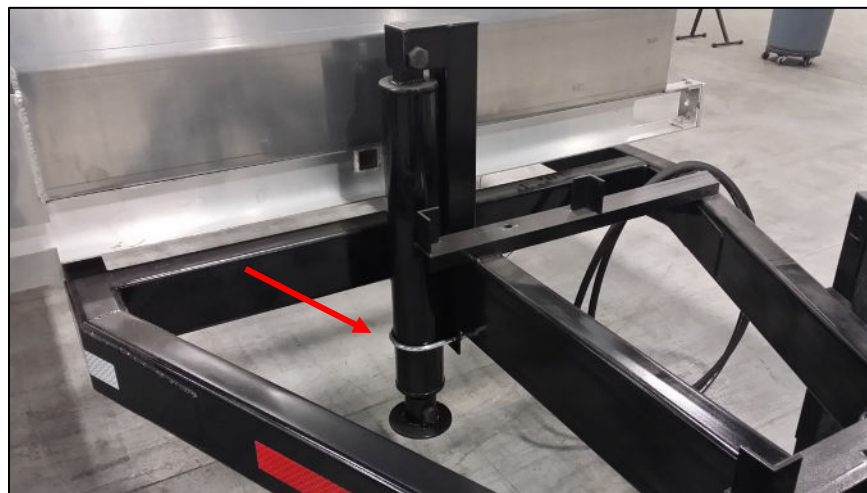
- **NEVER** reach inside the discharge chute with the engine running.



A.6 Safely PARKING and STORING

Note: follow these safety procedures when parking the Mulch Mule to avoid serious damage to the equipment and possibly cause injury or death.

- Always place the Mulch Mule on level ground when disconnecting from the tow vehicle for storage.
- Always chock and secure wheels from rolling.
- Lower the jack stand and remove the unit from the tow vehicle. Make sure the jack stand is resting on the manual jack.
- Shut off the fuel valve on the engine and confirm all doors are shut and secured.



A.7 Personal Protective Equipment

Always be sure to use proper personal protective equipment when operating machine. These items include but are not limited to:

- Safety Glasses
- Gloves
- Proper footwear
- Safety vest
- Hearing protection



Section B: Get to KNOW Your Equipment

B.1 Equipment Specifications

Mulch Mule 15-yard Trailer Mount Features

<u>Unit</u>	<u>Offering</u>
Load Capacity**	15 cubic yards
13hp Honda™ iGX390 Engine	✓
Hydraulic Lift Jack	✓
Electronic Operational Controls	✓
Tubular Steel Frame	✓
Heavy Duty Trailer Brakes	✓
Tarp System	✓
Marketing Kit	Optional
4' Extension Conveyor	Optional
Factory Installed Leaf/Debris Vac.	Optional
6 Function Wireless Remote Control	Optional
Spare Tire	Optional

Mulch Mule 15-yard Trailer Mount Specifications

<u>Unit</u>	<u>Specification</u>
Capacity Cubic Yards	15
Loading Height	7' 8"
Overall Height	8' 4"
Width @ rear door	64" (bottom)
Width @ rear door	96" (top)
Length of Cargo Area	15'
Overall Length	24' 4"
Empty GVW – no optional equipment	5,600 lbs.
Payload Capacity GVW	9,999 lbs.
Load Capacity	4,400 lbs.
Tongue Weight empty (no vac.)	680 lbs.
Tongue weight loaded (no vac.)	1,005 lbs.
Debris/Leaf Vacuum Weight	25hp = 393 lbs.
Engine – Electric Start	13hp 18 amp charge
Tire Sizes	215/75R/17.5
Axle Rating (Per)	8,000 lbs.

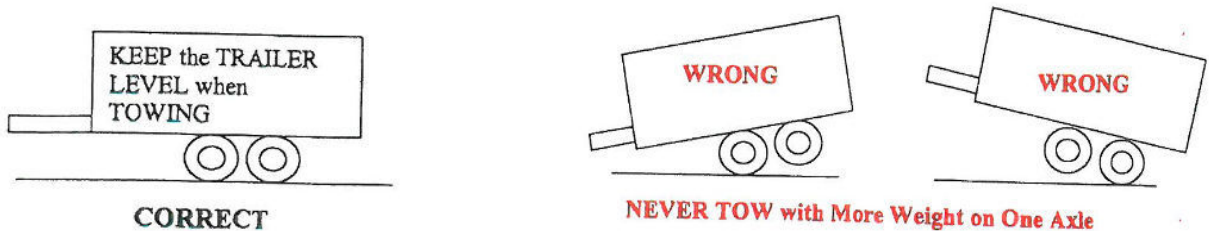
** The amount of material that can be actually hauled will depend on the actual weight of the material loaded. Over loading the machine may cause damage to the equipment and/or injure the operator. Depending on the loading variables, the equipment may not actually achieve 15 cubic yard haulages.



B.2 Trailer and Towing Hardware

The Mulch Mule utilizes a Pintle Hitch to tow. Do NOT change this to any other style hitch as it will VOID your Warranty and could cause damage to the frame of the Mulch Mule and your vehicle.

The Mulch Mule incorporates two **Torsion Bar axles** for added stability and strength. **It is VERY important that the trailer is ALWAYS towed LEVEL loaded or empty.** This will cause the trailer to tow smoothly and not put undue weight or stress on either axle.



Failure to tow the trailer at any other position other than LEVEL will cause undue stress on the axles potentially causing damage to the trailer and/or the Mulch Mule, and cause the trailer to tow poorly.

The Tongue Height on the Mulch Mule needs to be 20-22 inches off the ground when connected to the Tow Vehicle to keep the trailer Level.

NOTE: The measured distance from the ground to tongue is only a starting point as LEVEL is the desired position on any trailer mounted Mulch Mule.

Before Towing LOOK at the tires as they can tell you many things that need to be addressed or changed before departing.

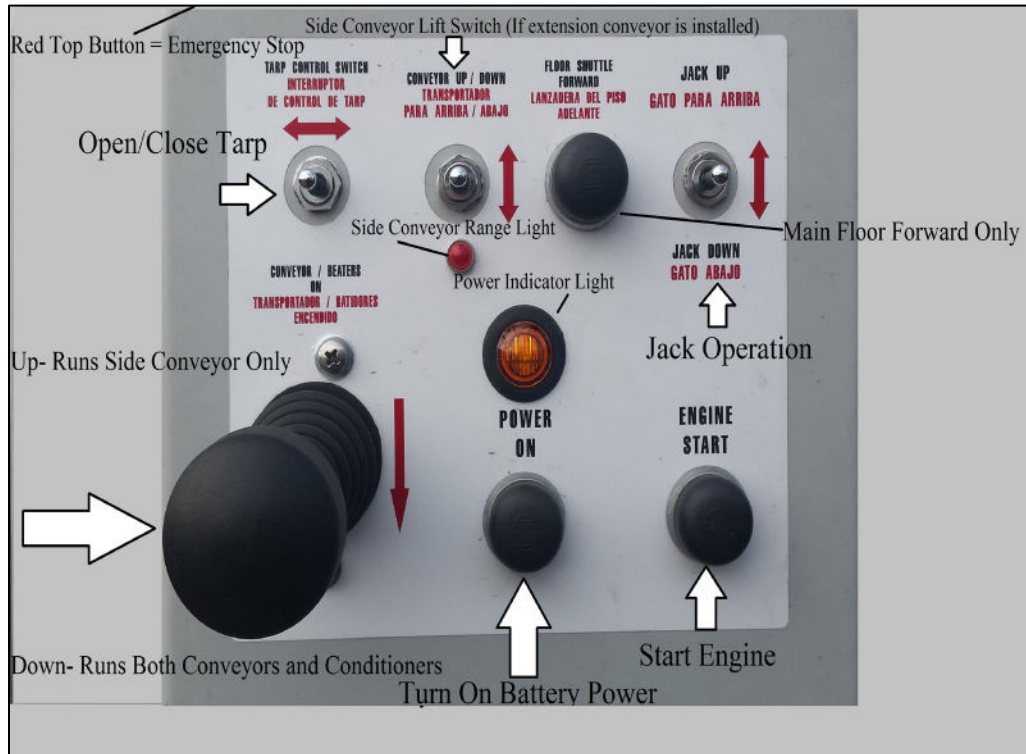
One tire is low or flat

- A) Not level / change tongue height
- B) Tire(s) needs air / add air
- C) Overloaded / remove material
- D) All the above

Both tires are low or flat

- A) Check tire pressure / add air
- B) Overloaded / remove material
- C) All the above

B.3 Main Control Panel



B.4 Engine, Fuel and Hydraulics

See engine operating manuals for instructions.

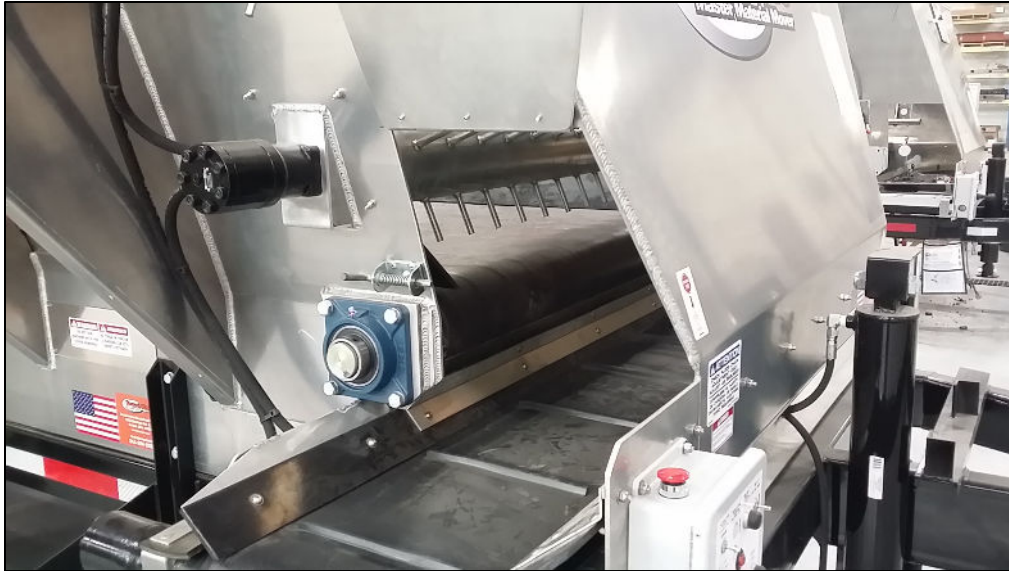
B.5 Rolling Floor

The rolling floor operation on the Mulch Mule has been designed to transport and distribute mulch and many other kinds of aggregate and landscape materials including topsoil, sand, peat, compost, gravel, stone and rock up to 2" in diameter. The amount of these materials that can be loaded, transported and distributed out of the side discharge conveyor will vary depending on variables such as machine capacity, moisture content of the materials, and material density.

CAUTION!!! It is not recommended that gravel, rock or stone larger than 2" in diameter, or other hard material, be dropped or loaded over the side of the machine. Doing so may cause damage to floor and could void the warranty.

B.6 Discharge Cute

Discharge Chute door open.



Control conveyor chute using toggles on the main control box. (For extension conveyors, use supplied remote control)

B.7 Tarp System

Mulch Mule shown with tarp fully open:



Mulch Mule shown with tarp fully closed:



***NEVER** travel with tarp in any position but the two shown in these pictures. If tarp is closed while travelling, make certain it is tied down.

B.8 Optional Equipment

Optional discharge chute extension with remote control.



Section C: How to MAINTAIN

C.1 Maintenance Schedule

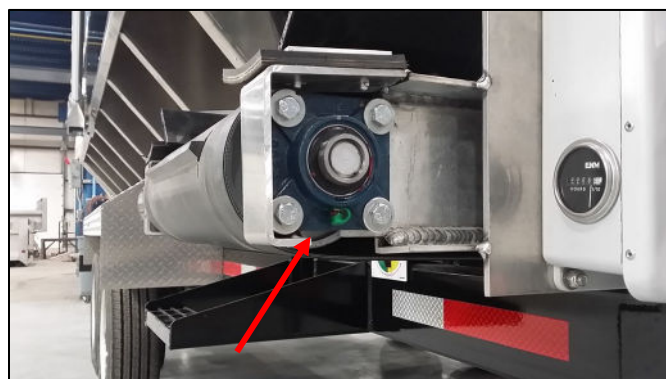
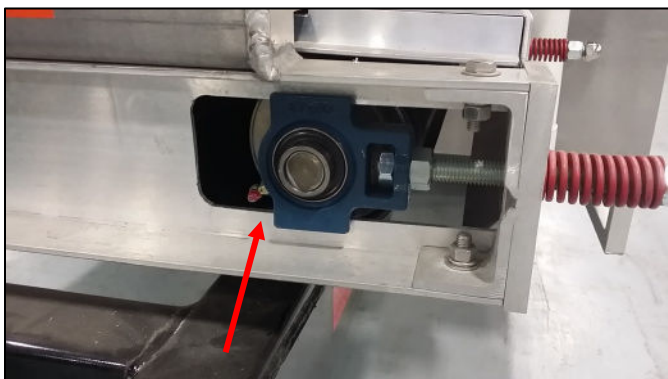
System	Item	Task	Frequency	Part #	Comments
Hydraulic	Oil	Change Oil	400 hours	AW46 Universal	
Hydraulic	Filter	Change filter	400 hours	#10H1006	
Hydraulic	15 Amp fuse	Replace	If Needed		Diagnose for cause.
Electrical	Trailer Brake Fuse	Replace	If Needed		Diagnose for cause.
Mechanical	Brakes	Check brakes for wear	500 miles		
Lubrication	All fittings & Bearings	Grease fittings and Bearings	20 hours	Multipurpose, Heavy Duty, #2 Grease	See section C.2 for specific list and location
Tire Pressure	15yd Unit	Confirm 80 psi	Every use		
Wheel Torque	15yd Unit	150 ft. lbs.	100 miles		
Main Floor	Floor Adjustment	Visual check for slack	Daily		See section C.3
Discharge Conveyor	Conveyor Adjustment	Tension	Daily		See section C.4
Honda Engine	Oil level				See owner's manual
Debris Vac. Engine	Oil level				See owner's manual

C.2 Lubrication

Conveyor Drive Grease Fitting



Discharge Chute Conveyor Fittings



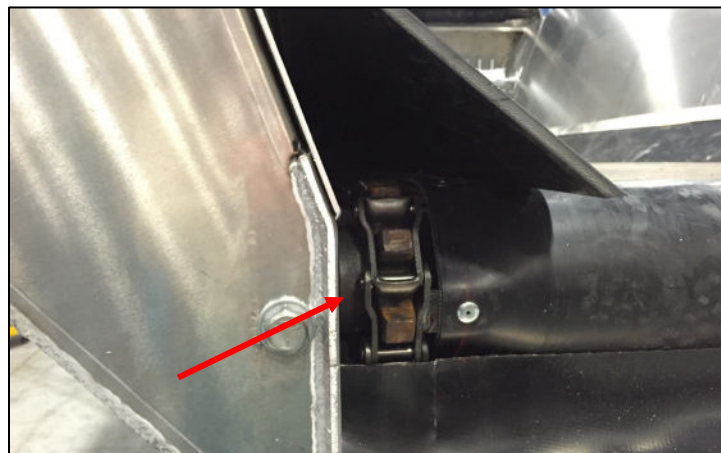
Tailgate Grease Fittings



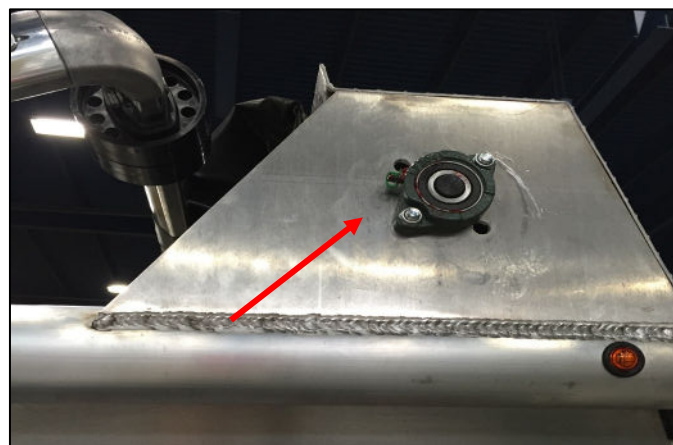
Conditioner Grease Fittings



Floor Chain Grease Fitting



Tarp Shaft Grease Fitting (if applicable)



C.3 Main Floor Chain Adjustment

Check the tension of the walking floor by visually inspecting the floor tension decal on both sides of machine.



Check the floor chain daily and adjust as needed. Failure to do so can cause damage to chain and floor assembly.

Verify visually that the chain position is within the viewing cutout on left and right side of machines and located in the **GREEN** area. If in the **RED** area adjustment is required, see below.

NOTE: On initial use the chain tension may need adjusted on every load. Once the floor has properly stretched then adjustment will be less frequent. Regardless, the chains should be visually inspected daily.

⚠ WARNING Over-tightening the chain can cause damage to the chain and the machine.

Making the Adjustment:

To adjust the tension of the floor chains, open the two access panels located on rear support frames.



Locate the 15/16" jam nut inside the panel. Back nut off ¼" to allow for chain adjustment. With the back door open and secured you will see two bolt heads located on the back-side of the rear support frames. Using the 15/16 wrench, turn each bolt head clockwise equally to increase chain tension. Continue this procedure gradually until chain can be viewed in the **GREEN** area on the side of the machine.

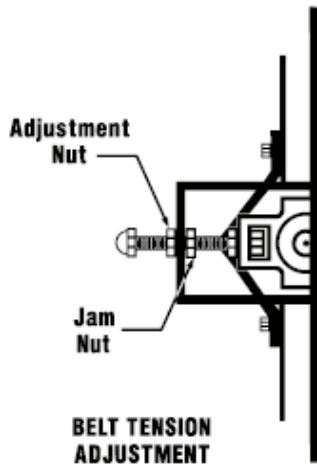


NOTE: Make sure to tighten each side equally.

Once adjustment has been made, close all access panels, start machine and roll floor forward approximately 6'. Check visual alignment again.

If not in alignment, turn off the engine and start procedure again. Continue until the chain remains in alignment.

C.4 Discharge Conveyor Adjustment



Belt Adjustment Procedure

- Loosen jam nut
- Turn adjustment nut until desired belt tension is achieved.
Be sure to adjust both sides evenly to ensure proper belt tracking.
- Tighten jam nut
- Run belt for 30-60 seconds to check for proper tracking
- Readjust if necessary

***Note: It only takes a small adjustment to move the belt. Under normal conditions, 1 to 2 turns should be sufficient.**

***Due to automatic spring tensioners, routine adjustment may not be necessary.**

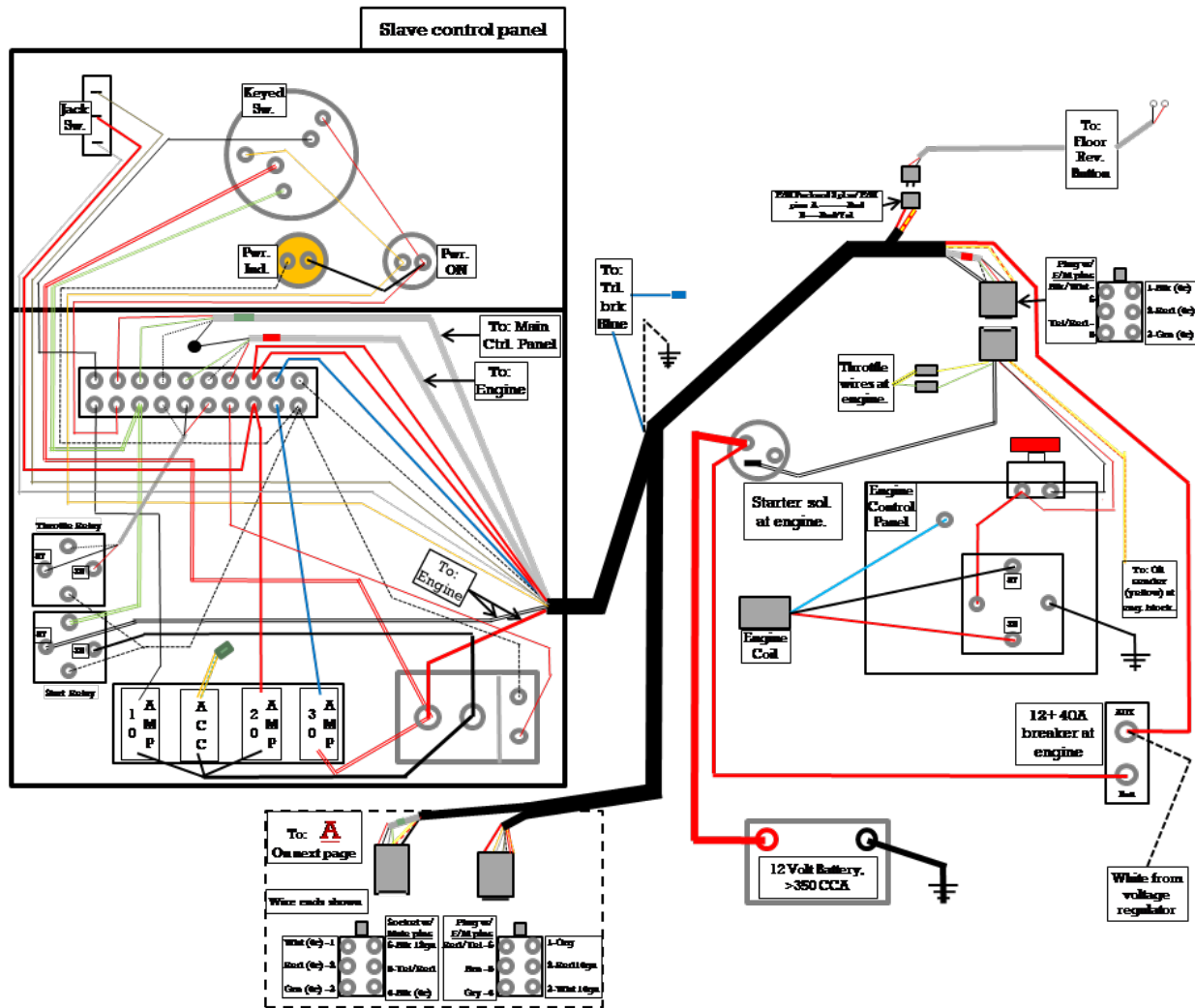
C.5 Honda Engine

For specific engine maintenance, please refer to the enclosed Honda Engine Manual.

C.6 Debris Vacuum Engine

For specific engine maintenance, please refer to the enclosed Engine Manual.

C.7 Wiring Diagrams



Section D: How to Use and OPERATE

D.1 Connecting the Trailer

Connect trailer to the tow vehicle for the Mulch Mule

- Start the engine (refer to the engine manual) on the side of the trailer to activate and operate the control panel also located on the side of the machine (refer to control panel diagram "A").
- On the Mulch Mule 15-yard unit, the jack stand is hydraulic driven and is controlled by jack stand lever on the control panel (**see control panel diagram A**) to raise or lower the jack stand.
- Lower the jack stand by holding jack stand lever (**refer to control panel diagram "A", jack stand Lever #1**) DOWN until the jack contacts the ground raising the front Pintle Hitch to the required height to mount the Mulch Mule to the tow vehicle. Once securely mounted to the tow vehicle raise the jack stand by holding the jack stand lever UP (refer to control panel diagram **A**; jack stand Lever #1) until the jack is raised to the highest position (**Figure B**).
- Always lower the jack stand when the Mulch Mule is not mounted to a vehicle.

NEVER tow the Mulch Mule with the jack stand lowered!



DANGER: With the machine NOT mounted to a tow vehicle and the engine NOT running, the front hitch can be lowered by moving or holding the Jack Stand lever (refer to control panel diagram "A", Jack Stand Lever #1) to the down position. Serious injury and/or death could occur if persons are under the trailer frame should this occur. Never place any part of your body under the machine without blocking the machine from rolling or dropping on anyone. Always place the jack stand in the lowered position when the machine is not mounted to a tow vehicle.

- Connect the trailer power line to the tow vehicle and check that all lights, turn signals, brake and hazard lights are functioning and operating correctly.
- Connect the safety chains and trailer breakaway line to the tow vehicle.



- Test the brakes to ensure they are functioning and operating correctly. Do NOT tow the machine if the brakes are not functioning properly.

D.2 Towing the Trailer

- Only tow the Mulch Mule with the properly rated vehicle for the machine either loaded or unloaded.
- Do NOT overload the machine beyond its rated load capacity or serious damage may occur. Refer to Section B for specifications.
- Confirm that the machine's discharge and rear doors are closed & secured.
- NEVER transport or allow individuals to be inside the machine while towing.
- When driving on public roads, always follow and obey local traffic laws and regulations associated with towing and operating a trailer.
- Check that the wheel nuts are tight & torque to the proper foot-pounds after the first 50 miles and every 100 miles thereafter. Refer to Section C.1 for the recommended maintenance schedule.

D.3 Loading Material

The Mulch Mule is designed to transport and distribute mulch and other materials such as topsoil, loam, sand, peat, compost, etc. The amount of these materials that can be loaded, transported and distributed out of the side discharge conveyor depends on variables such as machine capacity, moisture content, and density. **Max Load:** Mulch Mule 15-yard unit = 4400lbs. Therefore, capacity can vary. Operators need to understand the weight of the loaded vehicle and adhere to gross vehicle weight laws and restrictions.

Bulk loading is defined as utilizing a piece of loading equipment such as a Bobcat, skid steer, front loader, etc. to drop loose material into the bed of the Mulch Mule. Loose material can be bulk loaded into either side of the hopper. Take care not to make contact with side rails or rear door with loading equipment as to prevent damage.

Never bulk load material in front of the conditioners as this can damage the equipment. Finally, do not load material above the sides of the hopper.



D.4 Engine and Equipment Start

Once the Mulch Mule has been safely loaded and transported to its destination, you can start the engine and utilize the side discharge conveyor for optimal use.

D.5 Side Discharge Operation

After the engine has been safely started:

- Open the side discharge chute door.



- Place wheel-barrow or other containment device under the discharge conveyor. If the chute is too low you may need to raise the jack stand. Refer to Section A.5.
- Activate the side discharge conveyor lever.
- Hold the lever down completely, never partially engage the lever.
- Dispense required material and then release the lever to the STOP position.
- Repeat the process until desired amount of material has been unloaded.

***Note:**

- If floor speed is too high, an excess of material may build up in the side conveyor bay area. In this situation, use the clean out function to clear out bay and slow down floor speed.
- If the material jams the conditioners, open rear door, back material off of the conditioners and slow down floor speed.

D.6 Rear Unloading

Once the job has been completed, there may be excess material in the hopper bed. If so, utilize this procedure for unloading excess material.

- Park the vehicle in the desired location for unloading and secure the trailer utilizing wheel chocks and the jack stand.
- Start the engine.
- Unlatch the rear tailgate and completely open the rear door. Use the door retainer and hook the D-ring loop on the side-wall to secure the door.
- Depress the reverse shuttle button located toward the rear of the equipment on the driver's side to dispense material still in the hopper.

NEVER run or operate the floor bed in reverse with the rear door closed. NEVER close **⚠ WARNING** tarp with rear door open.

Severe damage to the equipment or bodily injury could result.

- Once the desired amount of material has been unloaded, shuttle the floor forward (as required) using the floor shuttle forward button until any remaining material has moved forward to allow rear door to close. NOTE: If significant material remains in the equipment, it needs shuttled even with the axle line for transport. Refer to Section A.4.

D.7 Tarp System Operation for Loading and Unloading

The tarp system is a standard feature on the Mulch Mule and designed to secure material from being blown from the machine during transport. The tarp is designed with a venting system and **MUST** be used when operating the optional Leaf Vacuum attachment.

***See tarp operation manual for further detail.**

Section E: Warranty

Limited Warranty for The American Road Machinery Company

ARM / TruckCorp LLC Limited Warranty

A. GENERAL PROVISIONS

The warranties described below are provided by ARM, a TruckCorp LLC Company ("ARM"), to the original purchaser of new equipment purchased directly from ARM or an authorized reseller of new ARM products. The limited warranties are non-transferrable once activated and the original proof of purchase is required at time of registration. Under these warranties, ARM will repair or replace, at its option, any covered part that is found to be defective in material or workmanship during the applicable Warranty Term.

All repairs, replacements or credits are at ARM's discretion. ARM reserves the right to deny any claim which does not meet any or all the requirements herein.

Warranty service must be performed by ARM. Alternatively, at ARM's discretion, an authorized dealer or service center may be used to perform warranty work provided authorization is given by ARM before work begins. ARM will not reimburse for work performed without prior authorization. Invoices must indicate the Return Authorization / PO Number or reference number issued by ARM to be recognized. Invoices received without this identifying information will not be paid. Warranty service will be performed by ARM without charge to the purchaser for parts and labor. The purchaser will be responsible, for any service call and/or transportation of product to and from ARM's facility, any premium charged for overtime labor requested by the purchaser, and any service and/or maintenance not directly related to any defect covered under the warranties below.

ARM expressly disclaims and shall not be liable under any cause of action for a claim under Ohio Revised Code §2307.78 for "liability of supplier" or "supplier liability," as those terms are used in the statute or any similar state law, as applicable. ARM shall not be liable for any damage to person or property, whether directly or indirectly caused by the product and shall not be liable for any incidental and consequential damages, loss of profit, loss of income or other economic or non-economic loss claimed to be associated with or result from a defective product.

B. WHAT IS WARRANTED

All parts and components that are manufactured by ARM are warranted to be free from defects in material and workmanship under normal use or service, when properly maintained and operated for the duration of the Warranty Term for each specified item.

C. (I) ITEMS COVERED SEPARATELY

This warranty does not apply to components that are part of the equipment but not manufactured by ARM, post-production changes or dealer modifications. These items include but are not limited to any vehicle chassis, engines, power take offs, pumps, tarp, vibrator, bodies, or standalone components, pintle plate, hitch, valves, axles, jack stands or controls. These items are subject to their own manufacturer's warranties, which may be different from the warranties provided herein.

(II) WHAT IS NOT WARRANTED

Pursuant to the terms of these warranties, ARM IS NOT RESPONSIBLE FOR THE FOLLOWING: (1) Used



equipment. (2) Any equipment that has been added, altered, or modified by a different company than ARM. (3) Any equipment that uses non-factory original replacement parts. (4) Depreciation or damage caused by normal wear, lack of reasonable and proper maintenance, failure to follow operating instructions/recommendations, misuse, lack of proper protection during storage, vandalism, the elements, collision or accident, rust, storm damage, exposure to extreme temperatures, hoist failure because of being in the raised position for extended periods of time, and other situations outside of ARM's control. (6) Normal maintenance, including parts and service. (7) Damage to any part of a plow unit, hitch, plowing vehicle or loss of use incurred by the striking of movable or immovable objects while using the equipment, plowing, or removing snow. (8) Environmental damage or damage resulting from time spent on dealer lots. (9) Paint warranty is limited to adhesion to metal surfaces only and does not include either the inside or the understructure of truck bodies. (10) Fit, form, function, or failure of the chassis. Dealerships and distributors are responsible for the condition of the chassis prior to delivery to the customer. Damage occurring to the chassis before arriving at or leaving the ARM premises shall not be warranted. Cosmetic damage resulting from transportation will be covered only if the unit is hauled by ARM or a third party authorized by ARM and only if the damage is reported within 24 hours of delivery. (11) Any secondary charges, travel, loss of use, down time or other incidental or consequential expenses. (12) Any charges for field service, labor, mileage, or other expenses incurred by the purchaser, user or charged by a third-party service organization or authorized dealer, unless previously approved by ARM in writing with all claims accompanied by a valid Return Authorization Number.

D. SECURING WARRANTY SERVICE

To secure warranty service, the purchaser must: (1) Complete and return the warranty registration documents within 7 calendar days from the date of sale, including proof of purchase. (2) Report the claimed product defect to ARM within 7 days of discovered failure and request repair within the applicable Warranty Term. (3) Return the equipment within 30 days of claim to ARM's facility located at 3026 Saratoga Avenue Canton, Ohio 44706, transportation, or freight prepaid. When freight costs might be excessive, photos may be sent in lieu of actual component if damage/defect can be clearly identified, at the discretion of the ARM warranty administrator.

E. NO IMPLIED WARRANTY, REPRESENTATION OR CONDITION

To the extent permitted by law, neither ARM, nor any company affiliated with ARM makes any warranties, representations, conditions or promises, express or implied, as to the quality, performance, or freedom from defect of the Equipment covered by these warranties other than those set forth herein. NO STATUTORY OR IMPLIED WARRANTIES OR CONDITIONS OF MERCHANTABILITY OR FITNESS FOR PURPOSE ARE MADE BY ARM. ALL IMPLIED WARRANTIES ARE SPECIFICALLY DISCLAIMED AND EXCLUDED HEREIN. TO THE EXTENT LEGALLY REQUIRED, ANY IMPLIED WARRANTIES OR CONDITIONS SHALL BE LIMITED IN DURATION TO THE APPLICABLE PERIOD OF WARRANTY SET FORTH IN TABLE 1. THE PURCHASER'S ONLY REMEDIES IN CONNECTION WITH THE BREACH OR PERFORMANCE OF ANY WARRANTY ON THE EQUIPMENT ARE THOSE SET FORTH HEREIN. IN NO EVENT WILL ARM, OR ANY COMPANY AFFILIATED WITH ARM, BE LIABLE FOR INCIDENTAL, CONSEQUENTIAL, OR PUNITIVE DAMAGES.

F. NO DEALER WARRANTY

The selling dealer has no authority to make any warranty, representation, condition or promise on behalf of ARM, or to modify the terms of limitations of this warranty in any way and makes no warranty on any other item unless it delivers to the purchaser a separate written certificate specifically warranting the item.

G. JURISDICTION AND VENUE

The limited warranties provided hereunder shall be construed and enforced under Ohio law. Any legal action regarding a dispute under this warranty or an action to enforce the terms hereof shall be



brought in the State Court located in Stark County, Ohio or in the Federal District Court for the Northern District of Ohio.

H. ENFORCEABILITY

Any provision of this Limited Warranty which is determined to be invalid or unenforceable under Ohio law shall not affect the validity or enforceability of any other provision contained herein, which provisions shall be enforced to the full extent permitted by the law.

TABLE 1: Warranty Terms

Upfits and Major Equipment

- Dump body upfit packages
- Hook Lift Units
- Individual Snowplows
- Vacuum Leaf and Debris Collectors
- Snow and Ice Upfit Packages

1 year for structural defects and 90 days for all other defects from the date of the sale to the end user/customer within a maximum time of 6 months from the sale of the product to the distributor/dealer.

Spreader Systems

- Under Tailgate Salt Spreaders
- V Box Spreaders
- Brine Systems

90 days for all defects from the date of the sale to the end user/customer within a maximum time of 6 months from the sale to the distributor/dealer.

Supplemental Items

- Loose Bolts
- Loose or Ungreased Fittings
- Hydraulic Leaks
- Tailgate Pins
- Tailgate Hinge Bushings
- Hydraulic Cylinder Pins
- Torque of Bolts
- Electrical Connections
- Loose Lift Axle Mounting Hardware

90 days from the date of sale to the end user/customer, within a maximum time of 6 months from the sale to the distributor/dealer. Issues of this nature reported after 90 days shall be considered the result of normal wear subject to regular maintenance by the customer as detailed in the owner's manual for the truck body and/or equipment/accessories and are not covered by ARM warranty.

Failure to follow the maintenance regimen outlined in the owner's manual for the truck body and /or equipment will void the warranty.



Mulch Mule Delivery Checklist:

To validate your warranty, please review the delivery checklist and sign off on each item:

Task	Inspection	Initial and Date
Review Owner's Manual	You should have received an Owner and Service Manual, Honda Engine Manual and Billy Goat Leaf Vacuum Manual	
Review Pintle Hitch Installation	Verify Proper installed Height for level towing	
Review 7-way trailer plug	Attach to tow vehicle and verify operation	
Engine operation	Insure function and placement: Air filter	
Engine operation	Insure function and placement: Fuel Shut Off	
Engine operation	Insure function and placement: Choke	
Engine operation	Insure function and placement: Throttle	
Engine operation	Battery location and connections	
Hydraulic System	Oil location and fill	
Hydraulic System	Insure function and placement: oil Filter	
Jack Stand	Operate manual and hydraulic jack stands	
Control Panel	30 Amp (Green) trailer breakaway	
Control Panel	15 AMP BLUE fuse elec. control valves	
Control Panel	Review and verify all operations	
Conveyor	Side door operation secures	
Conveyor	Operate	
Tarp	Review and verify all tie down locations	
Grease Fittings	Per manual, review all locations	
Wheel Stud	Review torque per manual and labels	
Tires	Review PSI per manual and labels	
Tailgate	Review operation and tailgate – safety side	
Rolling floor	Verify floor will NOT operate with rear gate closed	
Tailgate	Review tailgate locking operation	
Debris Loader	Review hose storage location	
Aux Conveyor	Review how to properly secure aux conveyor for transport	



Machine Data Page

Equipment	Serial Numbers	Size	Model Number
Vin Number		15 cu yard	Mulch Mule
Lower Trailer		15 cu yard	
Upper Box		15 cu yard	
Tire 1 Front Left Passenger Side		215/75R17.5	TR685
Tire 2 Rear Left Passenger Side		215/75R17.5	TR685
Tire 3 Front Right Driver Side		215/75R17.5	TR685
Tire 4 Rear Right Driver Side		215/75R17.5	TR685
Tire Spare		215/75R17.5	TR685
Axle Front		8000 LBS	#13 Torflex
Axle Rear		8000 LBS	#13 Torflex
Honda Engine		IGX 390	QZNR
Hydraulic Motor Conditioner Top			255320F3110AAAAA
Hydraulic Motor Conditioner Bottom			255320F3110AAAAA
Hydraulic Motor Front Unload			255320F3110AAAAA
Hydraulic Motor Main Belt Assembly			500470A1102ZAAAA
Gear Box Main Belt Assembly			S07A26604
Billy Goat Leaf Collector			DL2500SMM
Hydraulic Pump			111.20.372.00
Mountain Tarp Motor			10310
Mule Main Battery		460 CCA	6524
Billy Goat Battery		230 CCA	8223

